



Current and future plans for operational observations at NL wind farms

And some news about the NOOS FTP box

3 November 2021

Pieter Haaring @ Rijkswaterstaat
data management North Sea

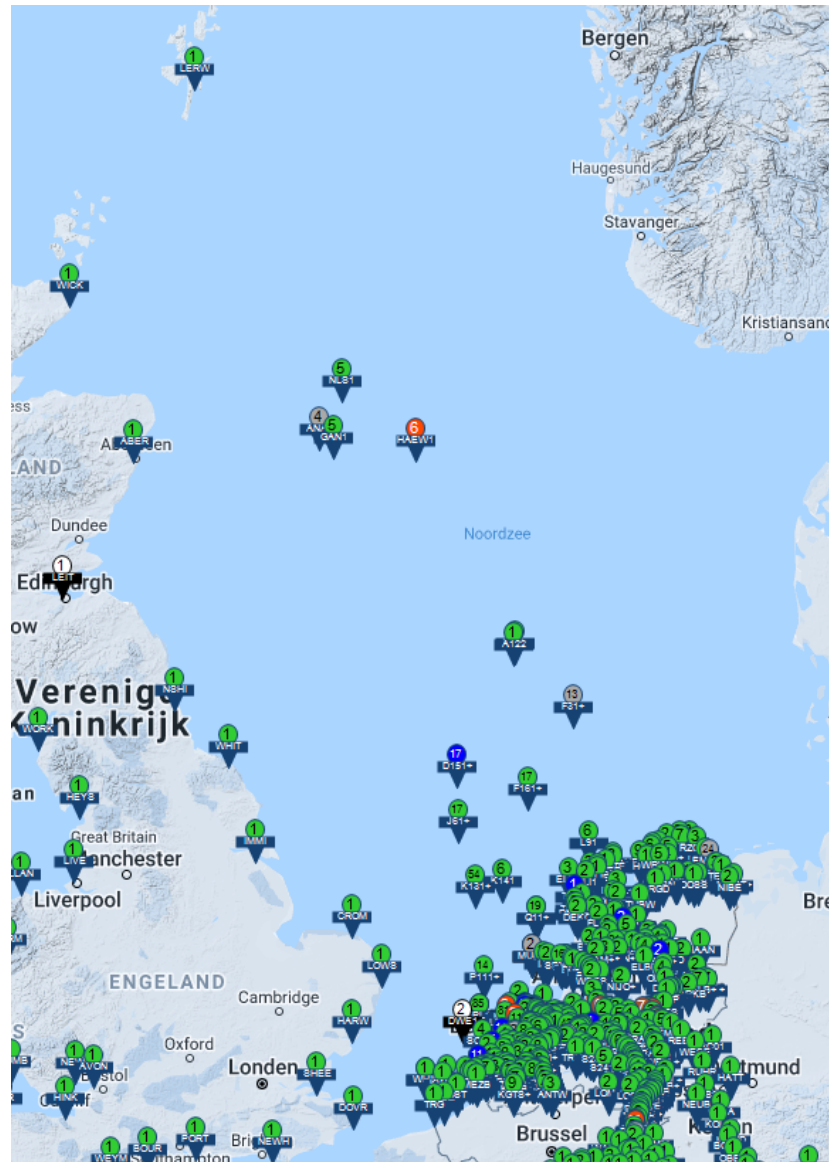


Hydro & Meteo Data Measurement Network

At this moment

Hydro parameters (Rijkswaterstaat)

- Water level
- Wave heights -direction
- Currents
- Water temperature
- Salinity



including data collected from our neighbours

Meteo (KNMI)

- Wind speed&direction
- Air temp
- Humidity
- View
- Air pressure
- clouds

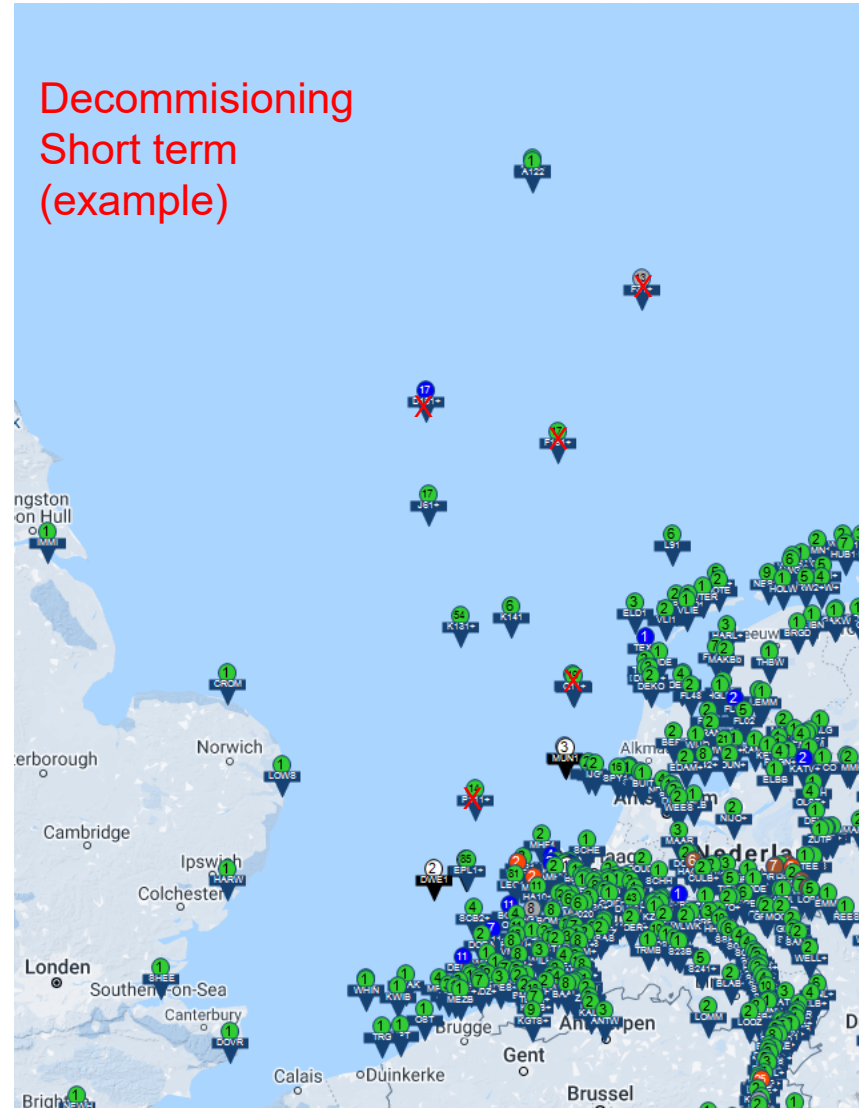


Problem

- › Decommissioning of the oil-and-gas offshore platforms



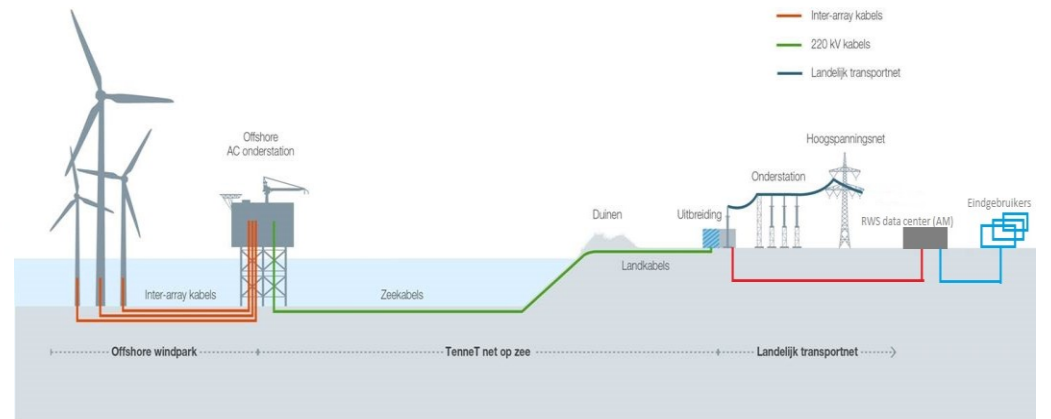
Decommissioning
Short term
(example)





Part of the solution

- Offshore windfarm AC sub stations





Hydro /Meteo data measured on/near substations

KNMI - Waarnemingen kust en Noordzee

https://www.knmi.nl/nederland-nu/weer/actueel-weer/kust-en-noordzee

Waarnemingen Offshore installaties Noordzee vrijdag 17 september 2021 14:50 uur

Station	Temp (°C)	Zeewater (°C)	RV (%)	Wind	Wind (m/s)	Max (m/s)	Zicht (m)	Druk (hPa)
BG-OHVS2	16.4		72	O	4	5	45000	1016.2
K14-FA-1C	17.3		84	WZW	5	6	35000	1014.7
AWG-1	17.3		75	ONO	3	4	45000	1016.1
K13 Alpha	16.6	17.7	85	ZW	6	7		
Borssele Alpha	17.6		83				29000	1015.5
Borssele Alpha	18.0		81	ZW	3	3	35000	1015.9
K12-CPP	15.9		79	ZO	4	6	45000	1016.0
F3-DB-1	16.0		73	O	5	6	45000	1016.2
J6-A	17.4		92	Z	3	4	5000	1014.8
L9-FF-1	17.7		80	OZO	3	4	29000	1016.4
P11-B	17.2		79	WZW	6	7	27000	1015.6
LE Goeree	17.9	18.6	81	WZW	5	6	28000	1015.8
Euro Platform	17.6	18.3	84	ZW	5	6	40000	1015.9
D15-FA-1	16.9		92	ZO	7	8	8000	1014.7

Netpos / AGRS

Water Temperature

Water Level

Wind

Air Pressure

Visibility

Air temperatuur en humidity

Cloud height

LiDAZephir wind lidar (300m)

Current Measurement Buoy (MK4)

Plans for: 3km wind lidar

to measure above the windfarm HKZ

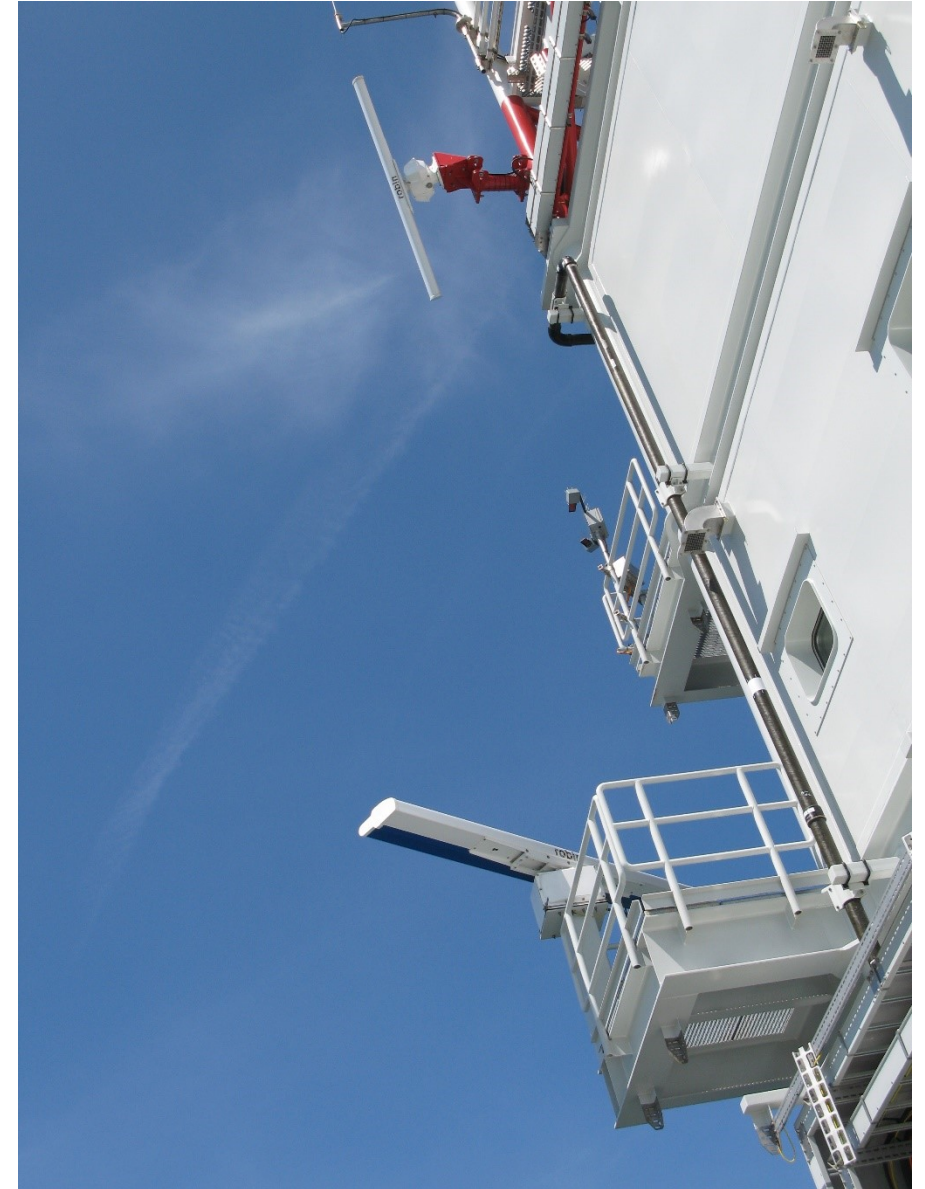
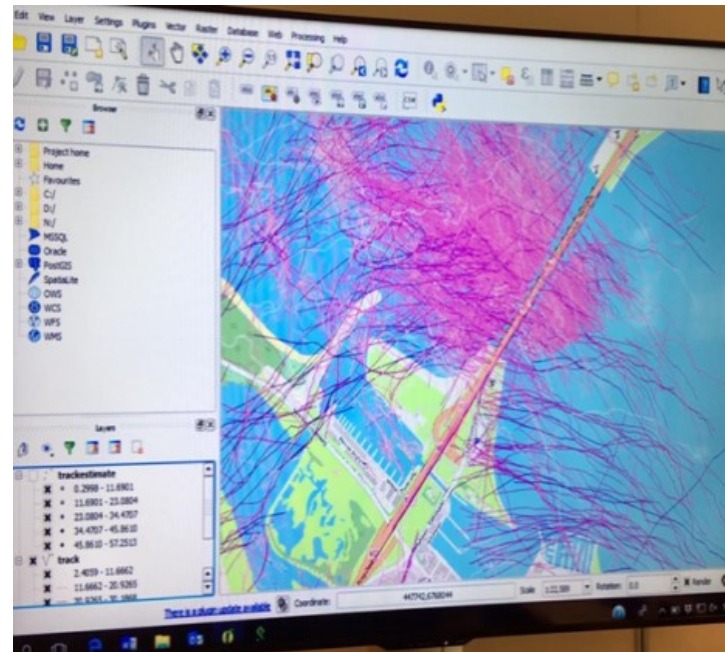
Steven Knoop @KNMI contact for wind lidar measurements

<https://cdn.knmi.nl/knmi/pdf/bibliotheek/knmipubIR/IR2021-01.pdf>



Also Ecology

- › Bird Radar (kalibrating bird migration models for start/stop)
- › Bat detector





However: NOOS (near) real time data availability

The screenshot displays the North West Shelf Data Portal interface. The main map shows the North West Shelf region, including parts of the United Kingdom, Norway, and Sweden. A red circle highlights a specific location on the map, with the text "there be dragons" written inside it. A tooltip for this location shows the name "A121" and parameters "DEP SWHT VAVH VAVT VHM0 VTPK VVA".

The interface includes several panels and controls:

- Facilities:** Ocean weather (Temperature), 1. Select time range (Last 30 days, Monthly, History), 2. Select Facilities by Parameter (Temperature, Salinity, Wave, Biochemical, Meteorology, Water Level, Current, River flow).
- Historical Data:** Show available stations.
- Ferrybox:** Layers (Overlays: Current, Wave, Water Level, Meteorology; Base Layer: OSM).
- Regions:** Locate Facilities, Add external Layer.
- Legend:** Fixed buoy / Mooring, Driftbuoy, Water level, Profiling float, Ship, River discharge, Sea mammal, Ferrybox routes (M/S Finnmaid, M/S Trollifjord, M/S Color Fantasy, M/S Lysbris, M/S Baltic Princess, M/S FunnyGirl, M/S Transpaper).
- Map:** Includes a compass rose, a scale bar (50 km, 20 nmi), and an overview map.

The footer text reads: "North-West Shelf Data Portal 2012, v. 0.9.2 - GEBCO base layer imagery reproduced from the GEBCO_08 Grid, version 20100927, www.gebco.net".



So a request for filling this situational data gap





Changes at Rijkswaterstaat impacting NOOS

- > FTP BOX → SFTP BOX
- > New protocol
- > New accounts
- > Change data January - June 2022
- > Details: martijn.weeda@rws.nl



Questions

