

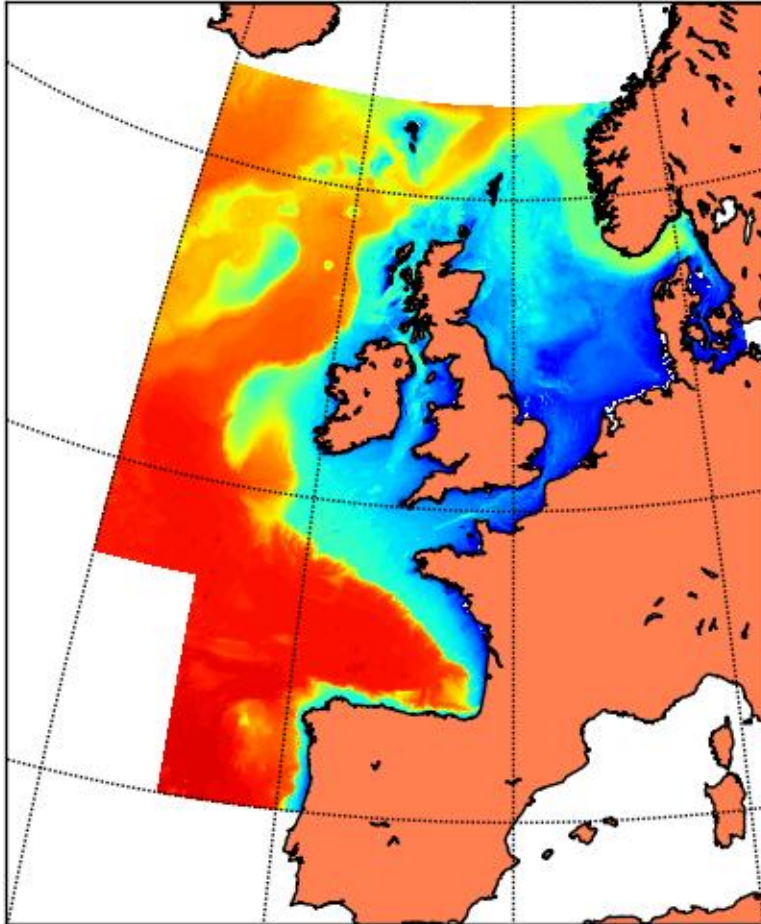
# NOOS Modelling

# Aims

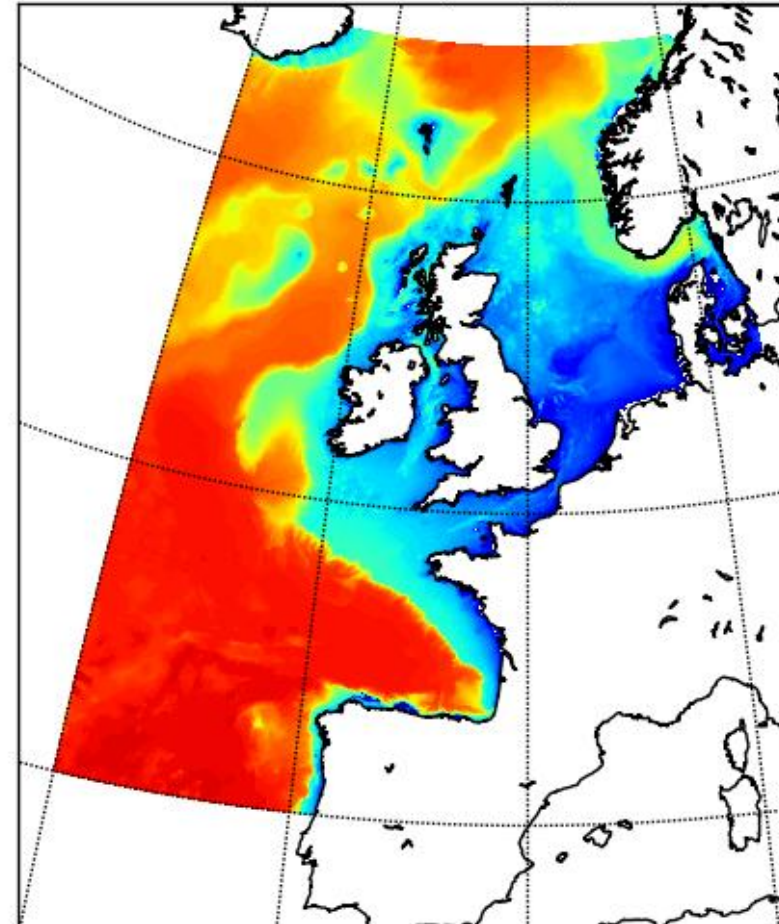
- To understand user requirement for boundary conditions from shelf wide models to drive local high resolution models.
- Facilitating the exchange of information on ocean modelling practices.
- Evaluate presently available bathymetries
- Create an updated NOOS bathymetry

# Comparing EMODNET and NOOS bathymetry

EMODNET bathymetry



NOOS bathymetry



# Differences

